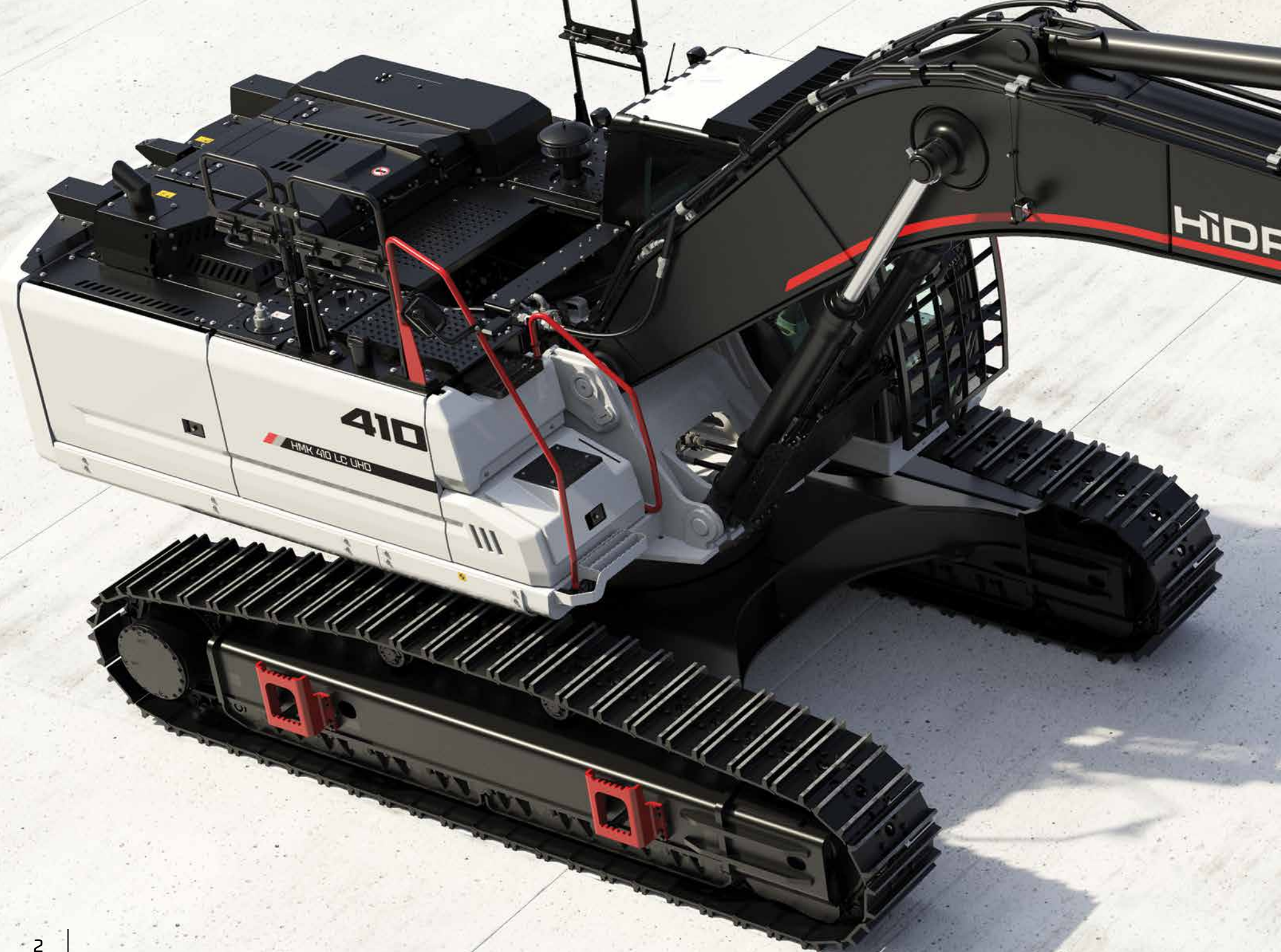


# H4 SERIES

## HMK 410 LC UHD



**HIDROMEK**





# New H4 Series

## Innovation coming from experience

**HMK 410 LC UHD** crawler excavator belonging to new H4 Series of HİDROMEK produced with the developed hydraulic system design; It offers superior performance by working quickly, productively and efficiently.

**HMK 410 LC UHD** provides high performance and efficient operation with its ultra-heavy-duty structure conforming for tough field conditions, its power, bucket capacity, breakout force, as well as its superior technology.

# H4

## SERIES

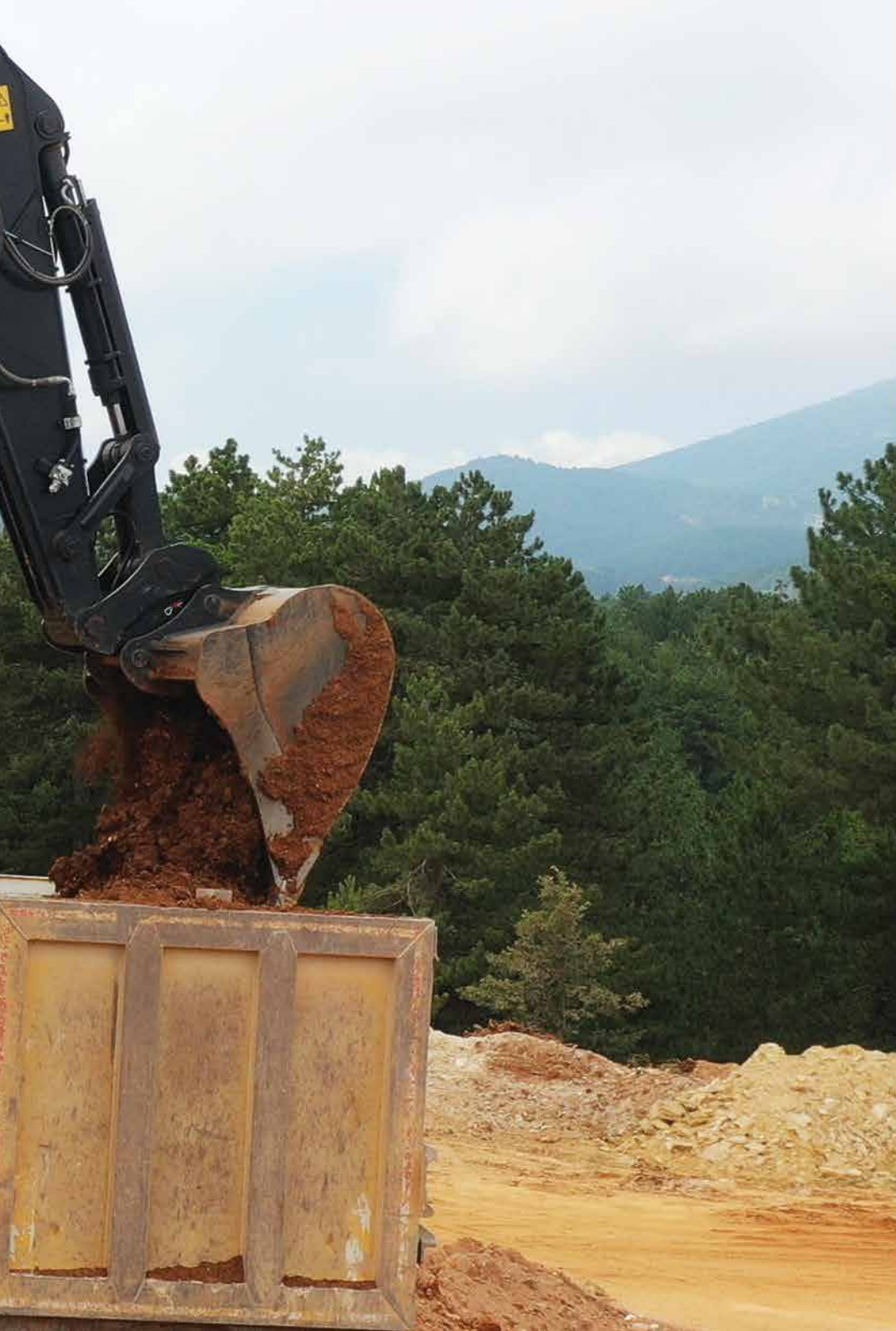
Performance.....	6-7
Durability.....	8-11
Safety.....	12-13
Technology.....	14-15
Comfort.....	16-17
HIDROMEK Smartlink - Ease of Service.....	18-19
Technical Features .....	20-25

The information and images, and equipment presented in this brochure are either standard or optional depending on the configuration. HIDROMEK has the right to modify the specifications and the designs of the model indicated in this brochure without prior notice.









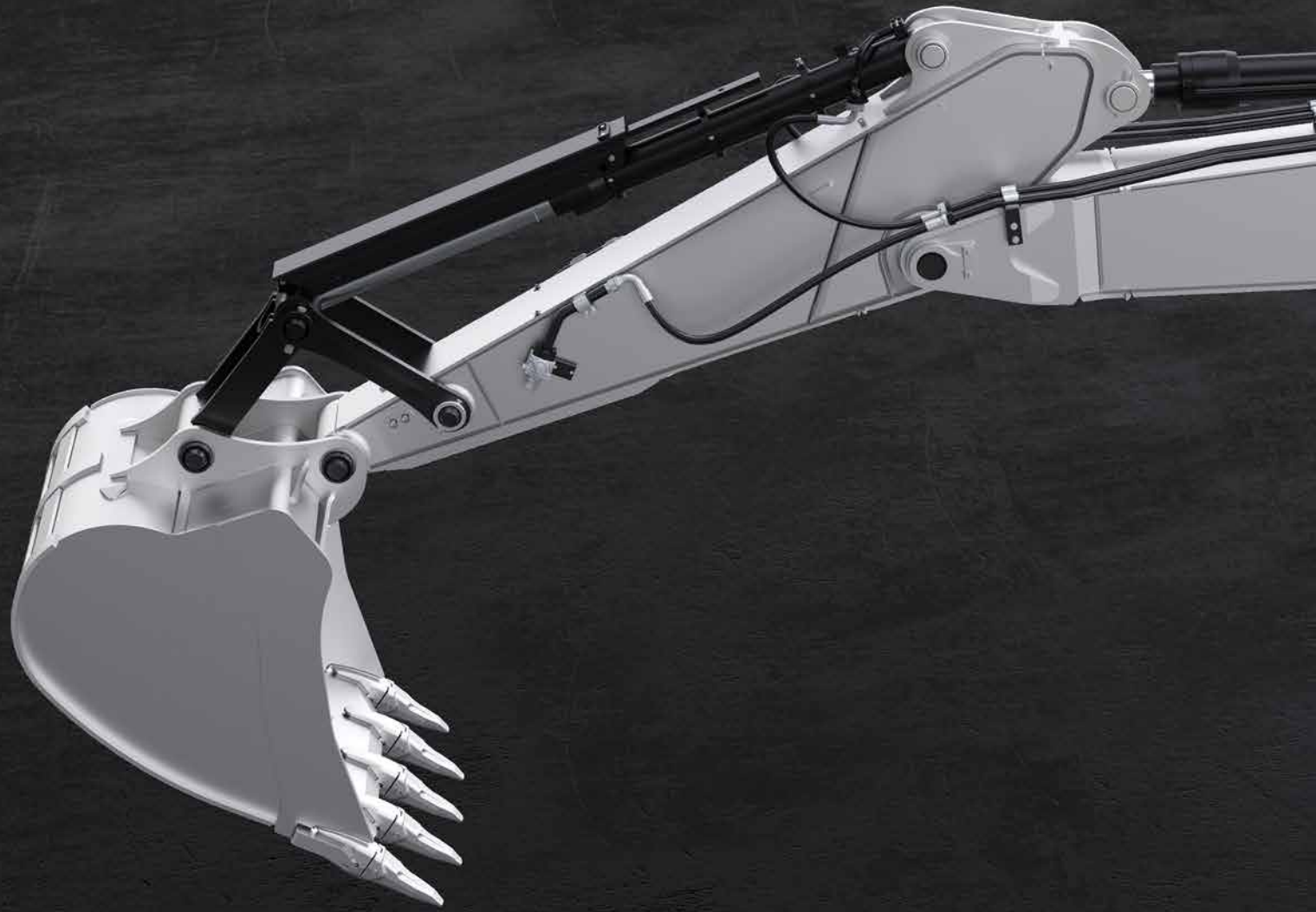
## Powerful. Strong. Balanced.

HMK 410 LCU HD, produced with the superior technology of H4 Series and its reinforced heavy-duty structure, offers safe and comfortable working in harsh field conditions by providing long-lasting and trouble-free usage through its durable structure.

HMK 410 LC UHD allows you to work at maximum capacity in different conditions with its robust and balanced structure, high performance engine, power and speed.

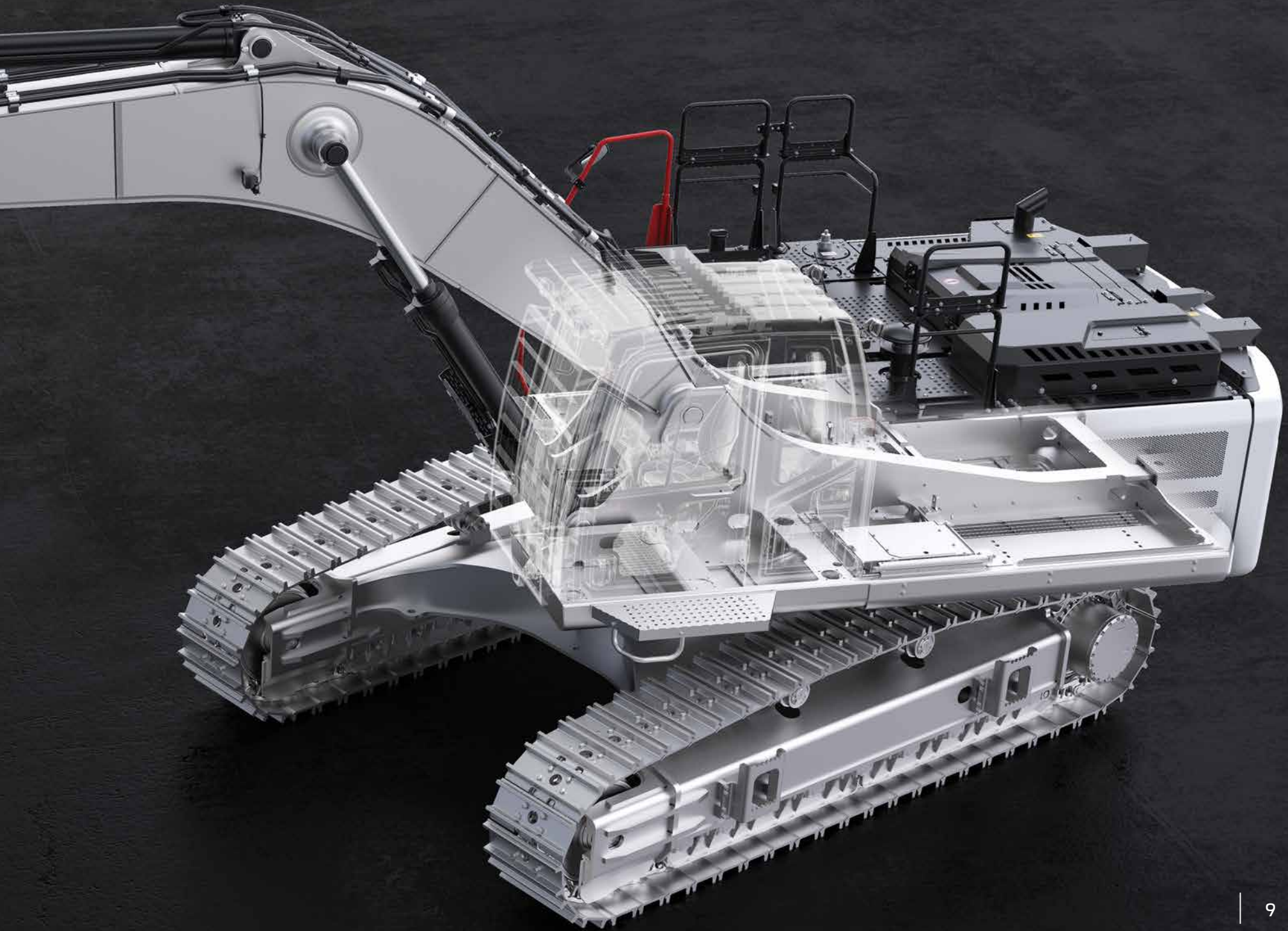
## Ultra Heavy Duty

HMK 410 LC UHD provides the most suitable performance for your work on challenging fields thanks to its ultra heavy duty structure and standard equipment. With its H4 Series technology, HMK 410 LC UHD offers fast and efficient working by providing time saving and takes your productivity to higher level.



# More durable

Produced to have reinforced heavy duty construction considering maximum performance, long life and smooth operation in severe field conditions, HİDROMEK excavators ensure more durability with the improvements made in the new H4 Series.





①

More durable anti-wearing plates (Hardox 450 HB)

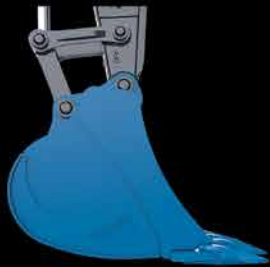


⑤

Heavy duty arm

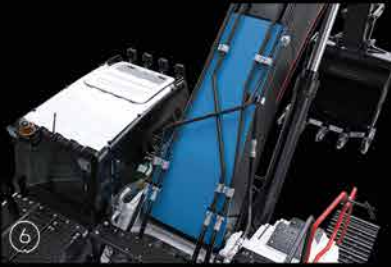
## Reinforced heavy duty construction

With their reinforced heavy duty construction produced at HIDROMEK's modern production facilities and going through sensitive quality-control processes, H4 Series excavators have excellent durability.



②

Optimized bucket form



⑥

Reinforced boom structure

## Bronze-Graphite Bushings



③

Reinforced arm supporting parts



⑦

Reinforced boom cylinder cast bearing



⑤

Bronze-graphite bushings used in boom-arm and boom-frame connection points increase the lubrication period, and greatly prevent the wear of the pins because of graphite, having a very high grease absorption and retention capability, embedded in the inner structure of the bushings.



④

Reinforced casting tip



⑧

Reinforced lowerframe and undercarriage components

④

①



# Safe working environment

## ROPS&FOPS2 cabin

Having the standards of ROPS (Roll Over Protective Structure) & FOPS2 (Falling Object Protective Structure), H4 Series excavators provide maximum safety and durability.

## Wide vision capacity

Designed with giving special importance to occupational safety, H4 Series ensure excellent vision by minimizing the blind spot on the side and rear cameras. Along with the increase in the number of led headlights, the night vision is significantly improved on H4 Series excavators; in addition, there are also red handles and warning labels providing maximum safety for the operator.

## Audio warning systems

H4 Series excavators enable safer working environment with their automatic starting horn, swing warning system and travel warning system.





# Shaped with technology

Electronic system of H4 Series excavators designed to protect the engine and hydraulic components to provide fuel saving and superior performance.

## Automatic stop system

In the new series, automatic stop system through configurable idling and stopping times provides fuel saving by stopping the engine after the machine is on idle. Automatic stop system in H4 Series helps to decrease the operational costs to minimum, and contributes to saving the environment.

## Safe fuel transfer pump

“Safe fuel transfer pump” added to H4 Series stops the pump automatically when the tank is full and this feature gets activated also when the pump does not transfer fuel for 30 seconds, and ensures that the pump stops automatically.

## Power boost technology

In H4 Series, power boost technology gets activated automatically in the conditions when the machine needs extra power, and ensures that the machine has the proper performance for the work.

## 8” Touch control panel

8 inch touch control panel is positioned ergonomically at a point that the operator can easily reach it. Touch control panel having high quality hardware and a large screen easily enables to control the machine features and access to machine information.

The features of touch control panel:

- It offers multi-language option
- Music system is integrated into 8” touch control panel.
- It allows the operator to adjust the flow required for the attachment without leaving the cab and save this information for 20 different attachments.
- During travel, rear and side view cameras with improved image quality and activated automatically can be controlled.
- Information on the average and instant fuel consumption can be obtained.
- Information on status such as atmospheric pressure, turbo boost pressure, fuel pressure and hydraulic pump pressure can be obtained.
- User can acquire working hour information such as work, attachment and travel.
- Maintenance registries can be obtained, and the user is warned when the maintenance time approaches.
- Failure codes and registries can be obtained.
- Audio warning systems can be controlled.





# OPERA, the guide of the field

H4 Series excavators are equipped with Opera (HIDROMEK Operator Interface) for the operator to use the machine easily, and feel comfortable and relaxed as he is in an office environment.

## Functions to be controlled by means of Opera

- Engine RPM control
- Access to control panel menu
- Functions of lights, windshield wipers and rear view camera
- Music system control
- Auto stop control of the engine to ensure maximum fuel economy during low idle
- On H4 Series machines, the preheating system available to protect the engine and hydraulic systems can be controlled via Opera.

# The aesthetic design of power

The seat ergonomic, air suspended and having 35 degrees adjustable backrest angle is provided in H4 Series, and it enables the operator to work comfortably and without getting tired for long working hours.

H4 Series which has many features\* such as proportional control pedals and joysticks, throttle control dial, operator touch screen, interior light, cup holder and heating-cooling box give more importance to user comfort.

HIDROMEK

\* Other features for user comfort on H4 Series machines can be found on page 21.

# Office comfort in construction equipment

## Automatic air conditioning system

Air vents and air conditioning system which can automatically adjust itself according to the ambient heat located in the redesigned cabin provide the best cooling performance in its class by 30%.

## Wide angle view

On the new series machines, the new two-piece windshield wiper system designed for creating more comfortable work environment provides a wide angle view which increases the work efficiency of the user.

## Led headlights for night vision

Led headlights on new H4 Series machines improve the night vision, and enable the operator to work more safely and comfortably.

## Dampers

By using 6 silicone dampers on H4 Series excavators, noise, shock and vibration are absorbed and prevented from being transmitted to the cabin under any working condition.



# You have the control with HÍDROMEK **SmartLink**

Telematic system HÍDROMEK Smartlink allows the user to easily access to machine location and technical information via computer and mobile phone.

## **Follow the work time and location of your machine through HÍDROMEK Smartlink!**

Through GPS tracking system, it is possible to track the location and the work time intervals of the machine.

## **Analyze your fuel consumption through HÍDROMEK Smartlink!**

It is possible to analyze fuel consumption according to the working conditions of the machine and daily fuel parameters.

## **Check the works for which your machine has been used through HÍDROMEK Smartlink!**

Through working mode information, it is possible to see the daily and total working hours of the machine for excavation and leveling and with crusher or with other optional attachments besides the power mode information and the speed ranges.

## **Follow your machine's maintenance through HÍDROMEK Smartlink!**

Under the Alerts list, the machine's upcoming maintenance can be checked while the information of the nearest authorized service can be obtained, and it can be contacted.

## **Contact the nearest authorized service or regional service through HÍDROMEK Smartlink!**

With the application, it is possible to obtain the information on Regional and Authorized Services of HÍDROMEK After Sales Services as well as the directions to them.

## **Have performance reports for the selected periods of time for your machines through HÍDROMEK Smartlink!**

For any selected periods of time, it is possible to have a report on daily fuel consumption, average fuel consumption, power and working modes, daily work time intervals and locations.



To download Smartlink application





## Easy maintenance and fast service for H4 Series through safe and easy access

H4 Series excavators, designed considering fast access to hydraulic and engine equipment, provide easy maintenance and service. Most of the maintenance can be easily carried out without getting on the machine, which shortens the service time and increases machine work time.

Automatic greasing system ensures that all parts of the machine can be lubricated from one single center.



## ENGINE

Brand & Model	ISUZU 6HK1X
Type	Water cooled, 4 cycles, 6 cylinders, inline, diesel engine with direct injection, turbocharger and intercooler
Power	281 HP (210 kW) @1900 rpm / SAE J1995 (Gross)
Maximum Torque	1080 Nm @1500 rpm (Gross)
Displacement	7790 cc
Bore x Stroke	115 mm x 125 mm
Emission Class	EU: Stage V

## HYDRAULIC SYSTEM

### MAIN PUMP

Type	2 axial piston pumps with variable displacement and swashplate
Max. Flow Rate	2 x 300 L/min
Pilot Pump	Gear type, 28 L/min

### WORKING PRESSURE

Attachment	350 kgf/cm <sup>2</sup>
Power Boost	380 kgf/cm <sup>2</sup>
Travel	350 kgf/cm <sup>2</sup>
Swing	285 kgf/cm <sup>2</sup>
Pilot	40 kgf/cm <sup>2</sup>

### HYDRAULIC CYLINDERS

Boom	2 x ø 150 x ø 105 x 1.510 mm
Arm	1 x ø 170 x ø 120 x 1.735 mm
Bucket	1 x ø 150 x ø 110 x 1.280 mm

Swing motor Fixed swashplate piston motor integrated with super shock absorber valve

Reduction 2 stage, planetary gear type

Swing Brake Hydraulic disc type, pilot operated and automatically released

Swing Speed 9,2 rpm

## LOWER FRAME

Construction "X" type lower frame with pentagon shaped box type side frames

Shoe 2 grouser

No. of Shoes 2 x 51 pieces

No. of Lower Rollers 2 x 9 pieces

No. of Upper Rollers 2 x 2 pieces

Full Trackguard Complete

Track Tensioner Hydraulic type with spring cushioning

## ELECTRICAL SYSTEM

Voltage 24 V

Battery 2 x 12 V / 150 Ah

Alternator 24 V / 50 A

Starter Motor 24 V / 5 kW

## TRAVEL AND BRAKES

Travel Fully hydrostatic

Travel Motor Axial piston motor with 2 speed stages and swashplate

Reduction 2 stage, planetary gear type

Travel Speed	High Speed	5,0 km/h
	Low Speed	3,0 km/h

Max. Traction 30.260 kgf

Gradeability 35° (%70)

Parking Brake Hydraulic disc type, pilot operated and automatically released

Ground Pressure 0,75 kgf/cm<sup>2</sup>

## FILLING CAPACITIES

Fuel Tank	565 L	Engine Cooling System	65 L
Hydraulic Tank	265 L	Engine Oil	44 L
Hydraulic System	470 L	AdBlue	70 L

## OPERATING WEIGHT (kg)

	Mono Boom
HMK 410 LCUHD	42.200

## EQUIPMENT

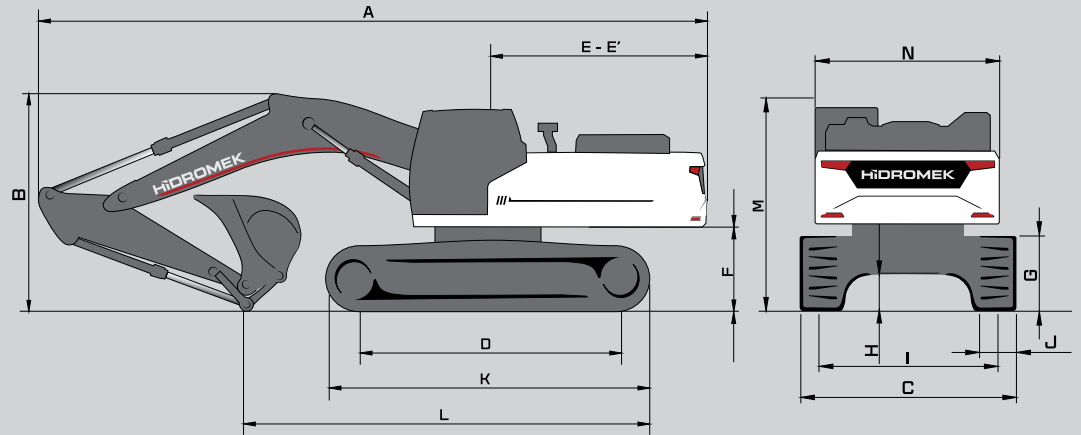
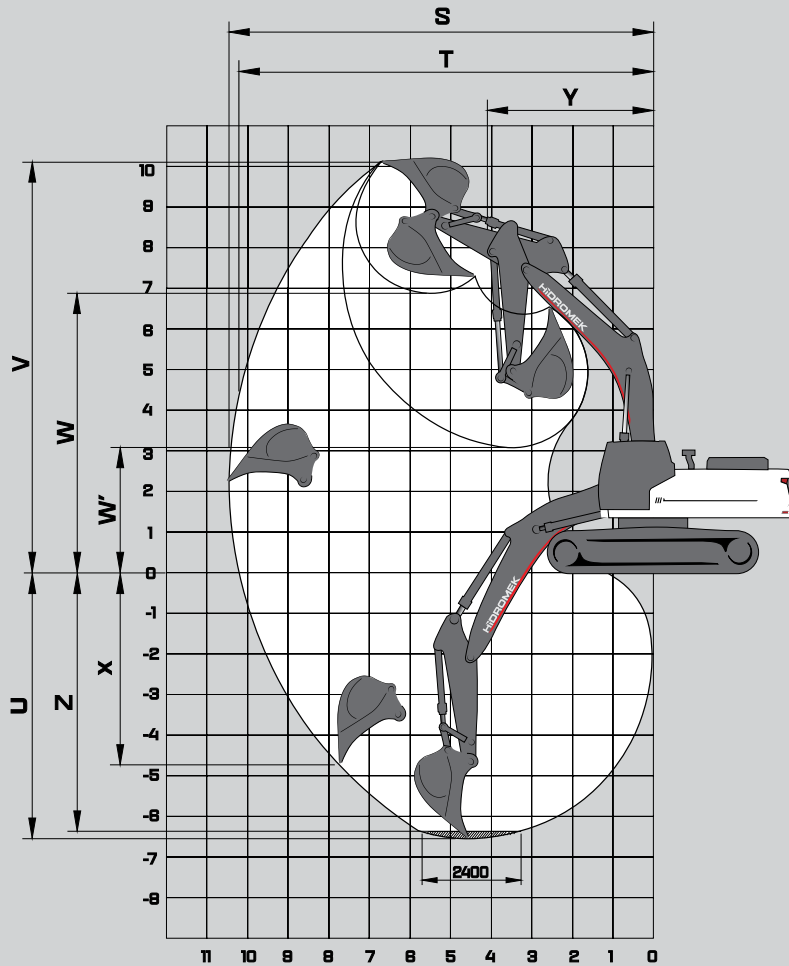
## HMK 410 LC UHD

Engine	Standard	Optional
Water cooled diesel engine with turbocharger and intercooler	●	
Engine pre-heat function	●	
Automatic idling	●	
One touch auto-idle system	●	
Automatic stop function	●	
Two-stage air filter	●	
Air filter clogged indicator	●	
Low engine pressure warning system	●	
Overheat warning system	●	
Adjustable power modes	●	
High altitude working function	●	
Electronical engine control	●	
Hydraulic System		
Boom and arm regeneration valve	●	
Automatic power boost	●	
Smooth boom feature	●	
Main hydraulic filter	●	
Backup ports (valve)	●	
Cylinder cushioning and contamination seals	●	
Single-acting hydraulic line, breaker	●	
Double- acting hydraulic line, crusher		0
Additional line		0
Quick coupling line		0
Attachment settings through instrument panel		0
OPERATOR'S CAB		
Pressurized and sound isolated cabin	●	
Air-conditioning	●	
Air-suspension seat	●	
Air-suspension seat with occupancy sensor		0
Heated seat		0
Operator touch screen	●	
Opera control system	●	
Throttle control dial	●	
Automatic travel speed (low / high)	●	
4 different working modes	●	
Sliding windscreen and removable lower windscreen	●	
Openable left door window	●	
Upper and lower windshield wiper	●	
Joysticks and pedals	●	
Travel pedals and control levers	●	
Proportional controlled pedals and joysticks		0
Electric horn	●	
Interior light	●	
Cup-holder	●	
Convenient storage	●	
Convenient storage (for equipment)	●	
Heating & Cooling box	●	
Easy-cleaned floor	●	
12V power socket	●	
Computer connection port	●	
Radio / mp3 / usb / Aux	●	
Detachable Movement Levers		0

Lower Frame	Standard	Optional
Narrow Lower Chassis (NLC)		0
Track width options 700/800		0
Lubricated and sealed track components	●	
Dozer blade		0
Mooring points for shipment	●	
Safety		
ROPS (Roll Over Protective Structure)	●	
*FOPS2 (Falling Object Protective Structure)	●	
Rear view camera	●	
Side view camera		0
Right and left rear view mirrors	●	
Working lamps	●	
LED working lamps		0
Rotating beacon		0
Swing and travel alarm		0
Emergency engine stop switch	●	
Pilot operated and automatically released swing brake	●	
Boom and arm cylinder safety valve		0
Overload warning system		0
Battery cut-off switch	●	
Handrails by the steps and on the upper frame	●	
Perforated metal non-slip plates	●	
Safety locking device	●	
Safety glass	●	
Emergency hammer	●	
Lockable fuel tank cover	●	
Upper and lower guards for windshield	●	
Miscellaneous		
Telematic system (HÍDROMEK Smartlink)		0
GEO System		0
Fuel transfer pump with automatic stop	●	
Water sensor on fuel pre-filter	●	
Bio oil B7	●	
Alternator - Battery	●	
Battery Charge Indicator	●	
Automatic lubrication system		0
Working lamp guards		0
Hydraulic breaker return line filter	●	
Double pump combination function		0
Choosing single or double acting attachment on the instrument panel		0
Choosing the control method for the optional attachment		0
Boom cylinder piping guard	●	
Bucket cylinder rod guard	●	
Warning horn	●	
Counterweights		0

● STANDARD 0 OPTIONAL

(\*) FOPS2 upper cabin protection is standard in countries with CE requirements.



### DIMENSIONS

		LC UHD
		Mono Boom
<b>BOOM (m)</b>		<b>*6,10</b>
<b>ARM (m)</b>		<b>*2,60</b>
<b>GENERAL DIMENSIONS (mm)</b>	A) Overall Length	10.940
	B) Overall height (to top of boom)	3.640
	C) Overall Width	3.500
	D) Distance between tumbler	4.300
	E) Distance from center of swing to rear end	3.450
	E') Tail swing radius	3.505
	F) Counterweight Clearance	1.330
	G) Track Height	1.210
	H) Ground Clearance	615
	I) Track Gauge	2.900
	J) Shoe Width	600
	K) Track Length	5.310
	L) Length on ground (transport)	6.640
	M) Overall height of cab	3.280
N) Overall width of upperstructure	2.990	
<b>WORKING RANGES (mm)</b>	S) Maximum Digging Reach	10.460
	T) Maximum Digging Reach on Ground Level	10.210
	U) Maximum Digging Depth	6.530
	V) Maximum Digging Height	10.160
	W) Maximum Dumping Height	6.910
	W') Minimum Dumping Height	3.110
	X) Maximum Vertical Digging Depth	4.720
	Y) Minimum Swing Radius	4.110
	Z) Maximum Digging Depth (2440 mm level)	6.350

\* Standard

## FORCES

		LC UHD	
		Mono Boom	
	BOOM (m)	*6,10	6,50
	ARM (m)	*2,60	3,20
SAE	Bucket Digging Force	20.300	19400
	Bucket Digging Force (Power Boost)	22.000	21.100
	Arm Crowd Force	19.100	16.100
	Arm Crowd Force (Power Boost)	20.800	17500
ISO	Bucket Digging Force	23.300	20400
	Bucket Digging Force (Power Boost)	25.300	22.100
	Arm Crowd Force	20.400	16.800
	Arm Crowd Force (Power Boost)	22.100	18.200

A- Material density less than 2.000 kg/m<sup>3</sup>  
 B- Material density less than 1.800 kg/m<sup>3</sup>  
 C- Material density less than 1.500 kg/m<sup>3</sup>  
 D- Material density less than 1.200 kg/m<sup>3</sup>

\* Standart

## STANDARD BUCKET



	Width	1.770 mm
	Capacity (SAE)	*2,5 m <sup>3</sup>
	Weight	2.230 kg
	Number of Teeth	5
ARM	*2,60 m	B
	3,20 m	C

## OPTIONAL BUCKET SELECTION SCHEME

General Purpose Bucket



Heavy Duty Type Bucket



	1.525 mm	1.650 mm	1.525 mm	1.650 mm	1.750 mm	1.930 mm
	1,80 m <sup>3</sup>	2,0 m <sup>3</sup>	1,80 m <sup>3</sup>	2,0 m <sup>3</sup>	2.2 m <sup>3</sup>	2,4 m <sup>3</sup>
	1.900 kg	2.020 kg	1.735 kg	1.855 kg	1.955 kg	2.140 kg
	4	5	5	5	5	6
	A	A	A	A	A	C
	A	C	A	A	A	D

\* Standard

## QUICK COUPLER



## ROCK TYPE BUCKET



## RIPPER



HEAVY DUTY

ATTACHMENTS

LIFTING CAPACITY (kg)												HMK410 LC UHD			
	Boom: 6,1 m		Arm: 2,6 m		Bucket: 2.5 m <sup>3</sup>		Lower: DG600, 3500		CW: 6500 kg				📏 : Front	📏 : Side	
A, m	1,5		3,0		4,5		6,0		7,5		9,0		Maximum Reach		
B, m	📏	📏	📏	📏	📏	📏	📏	📏	📏	📏	📏	📏	📏	📏	R, m
7,5													*5750	*5750	7.16
6,0									*7700	7600			*5700	*5700	8.07
4,5					*12200	*12200	*9600	*9600	*8250	7350			*5900	5550	8.62
3,0					*15500	*15500	*11200	10250	*9050	6950			*6400	5050	8.88
1,5					*17900	15150	*12500	9600	*9750	6650			*7250	4900	8.88
0 (Ground)			*13150	*13150	*18650	14600	*13250	9150	*10150	6400			8450	5050	8.62
-1,5	*15050	*15050	*20800	*20800	*18000	14500	*13100	9000	*9900	6300			*8900	5600	8.07
-3,0	*22050	*22050	*22500	*22500	*16100	14750	*11850	9150					*9200	6950	7.16
-4,5			*16600	*16600	*12250	*12250							*9150	*9150	5.71

LIFTING CAPACITY (kg)												HMK410 LC UHD			
	Boom: 6,5 m		Arm: 2,6 m		Bucket: 2.2 m <sup>3</sup>		Lower: DG600, 3500		CW: 6500 kg				📏 : Front	📏 : Side	
A, m	1,5		3,0		4,5		6,0		7,5		9,0		Maximum Reach		
B, m	📏	📏	📏	📏	📏	📏	📏	📏	📏	📏	📏	📏	📏	📏	R, m
7,5													*6900	*6900	7.49
6,0									*7400	*7400			*6950	6200	8.36
4,5					*12500	*12500	*9550	*9550	*8050	7400			*7300	5300	8.89
3,0					*15850	*15850	*11150	10100	*8900	7000	*7650	5000	*7550	4850	9.15
1,5					*18000	14750	*12500	9450	*9650	6600	*8000	4850	7800	4700	9.15
0 (Ground)					*18500	14300	*13150	9050	*10100	6350			8050	4800	8.89
-1,5			*17700	*17700	*17850	14300	*13100	8900	*10000	6250			*8650	5300	8.36
-3,0			*22250	*22250	*16200	14550	*12100	9050					*9050	6400	7.49
-4,5			*17500	*17500	*13100	*13100	*9600	9400					*9300	9100	6.12

LIFTING CAPACITY (kg)												HMK410 LC UHD			
	Boom: 6,5 m		Arm: 3,2 m		Bucket: 2.0 m <sup>3</sup>		Lower: DG600, 3500		CW: 6500 kg				📏 : Front	📏 : Side	
A, m	1,5		3,0		4,5		6,0		7,5		9,0		Maximum Reach		
B, m	📏	📏	📏	📏	📏	📏	📏	📏	📏	📏	📏	📏	📏	📏	R, m
7,5									*6350	*6350			*4450	*4450	8.30
6,0									*6700	*6700	*4950	*4950	*4400	*4400	9.10
4,5							*8700	*8700	*7450	*7450	*6750	5300	*4550	*4550	9.59
3,0					*14550	*14450	*10400	10350	*8350	7100	*7200	5050	*4900	4250	9.83
1,5					*17200	15150	*11950	9600	*9250	6700	*7700	4850	*5450	4100	9.83
0 (Ground)			*10000	*10000	*18400	14450	*12900	9100	*9850	6350	7850	4700	*6350	4200	9.59
-1,5	*10900	*10900	*15250	*15250	*18300	14250	*13150	8900	*10050	6200	7750	4600	7650	4550	9.10
-3,0	*16050	*16050	*21650	*21650	*17100	14350	*12550	8900	*9500	6200			*8150	5300	8.30
-4,5	*22100	*22100	*20500	*20500	*14650	*14650	*10800	9150					*8450	7000	7.10
-6,0					*9900	*9900							*8250	*8250	5.22

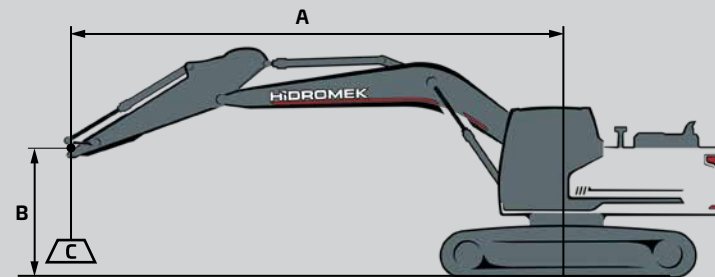
LIFTING CAPACITY (kg)												HMK 410 LC UHD			
	Boom: 6,1 m		Arm: 2,6 m		Without bucket		Lower: DG600, 3500		CW: 6500 kg				📍 : Front	📍 : Side	
A, m	1,5		3,0		4,5		6,0		7,5		9,0		Maximum Reach		
B, m	📍	📍	📍	📍	📍	📍	📍	📍	📍	📍	📍	📍	📍	📍	R, m
7,5							*10400	*10400					*9400	*9400	6.76
6,0							*10850	*10850	*10150	8750			*9000	8350	7.72
4,5					*15350	*15350	*12100	12050	*10550	8550			*9000	7300	8.30
3,0					*18650	17450	*13600	11450	*11200	8250			*9400	6750	8.57
1,5					*20500	16600	*14750	10950	*11750	8000			10050	6650	8.57
O (Ground)					*20500	16300	*15150	10650	*11900	7850			10450	6850	8.30
-1,5			*21050	*21050	*19300	16350	*14600	10600	*11200	7850			*10700	7550	7.72
-3,0			*21600	*21600	*16650	16650	*12650	10800					*10600	9250	6.72
-4,5					*11400	*11400							*9400	*9400	5.21

LIFTING CAPACITY (kg)												HMK 410 LC UHD			
	Boom: 6,5 m		Arm: 2,6 m		Without bucket		Lower: DG600, 3500		CW: 6500 kg				📍 : Front	📍 : Side	
A, m	1,5		3,0		4,5		6,0		7,5		9,0		Maximum Reach		
B, m	📍	📍	📍	📍	📍	📍	📍	📍	📍	📍	📍	📍	📍	📍	R, m
7,5													*9550	9450	7.19
6,0							*10450	*10450	*9550	8750			*9400	7650	8.10
4,5					*15500	*15500	*11800	*11800	*10100	8450			*9450	6750	8.65
3,0							*13350	11200	*10850	8150			9500	6300	8.91
1,5							*14500	10700	*11500	7850			9350	6150	8.91
O (Ground)					*20100	15950	*14900	10400	*11750	7650			9700	6350	8.65
-1,5			*16450	*16400	*18950	16050	*14500	10400	*11350	7650			*10250	6950	8.10
-3,0			*21300	*21300	*16800	16300	*13000	10550					*10300	8250	7.19
-4,5					*12750	*12750							*9750	*9750	5.76

LIFTING CAPACITY (kg)												HMK 410 LC UHD			
	Boom: 6,5 m		Arm: 3,2 m		Without bucket		Lower: DG600, 3500		CW: 6500 kg				📍 : Front	📍 : Side	
A, m	1,5		3,0		4,5		6,0		7,5		9,0		Maximum Reach		
B, m	📍	📍	📍	📍	📍	📍	📍	📍	📍	📍	📍	📍	📍	📍	R, m
9,0													*7700	*7700	6.66
7,5									*8550	*8550			*7100	*7100	7.93
6,0									*8750	*8750			*6900	6750	8.76
4,5					*13900	*13900	*10950	*10950	*9450	8550	*8700	6350	*6950	6050	9.27
3,0					*17450	17350	*12600	11350	*10300	8150	*9050	6200	*7200	5650	9.52
1,5					*19700	16300	*14000	10750	*11100	7850	9150	6000	*7700	5550	9.52
O (Ground)					*20250	15900	*14750	10400	*11550	7600	9050	5900	*8600	5700	9.27
-1,5			*15050	*15050	*19600	15850	*14650	10250	*11500	7500			9400	6100	8.76
-3,0			*24000	*24000	*17900	16050	*13650	10350	*10500	7600			*9550	7100	7.93
-4,5			*19300	*19300	*14700	*14700	*11050	10650					*9400	9250	6.67

- A Load Radius
- B Load Point Height
- C Lifting Capacity

1. The above loads are in compliance with SAE J1097 and ISO 10567 Hydraulic Excavator Lifting Capacity Standards
2. The load point is the center-line of the bucket pivot mounting pin on the arm
3. Lifting capacity cannot exceed 75% of tipping capacity or 87% of hydraulic capacity.
4. (\*) indicates load limited by hydraulic capacity.



# HİDROMEK®

## HEAD OFFICE

**Address :** Ahi Evran OSB Mahallesi,  
Osmanlı Caddesi, No:1, 06935  
Sincan-ANKARA/TÜRKİYE

**Phone :** +90 312 267 12 60

**Fax :** +90 312 267 12 39

**E-mail:** export@hidromek.com.tr

## AFTER SALES SERVICE

**Address :** İstanbul Yolu 17. Km,  
Şehit Osman Avcı Mahallesi,  
No: 479, Etimesgut-ANKARA/TÜRKİYE

**Phone :** +90 312 280 87 40

**Fax :** +90 312 280 87 48

## HİDROMEK® WEST

### HIDROMEK MAQUINARIA DE CONSTRUCCION ESPAÑA S.L.

**Address :** Avenida del Progrés, 7, 08840 –  
Viladecans Barcelona/ SPAIN

**Phone :** +34 93 638 84 65

**E-mail :** info@hidromek.es

## HİDROMEK® JAPAN

**Address :** 5-10, Hashimoto 6-chome,  
Midori-Ku, Sagamihara,  
Kanagawa, 252-0143 JAPAN

**Phone :** +81 42 703 0261

**Fax :** +81 42 703 0262

**E-mail :** Kiyoko.Shinoda@hidromek.com

## HİDROMEK® RUS

**Address :** Bld. 72, Zhivopisnaya str., khutor  
Oktyabrskiy, Krasnodar,  
350032, RUSSIA

**Phone :** +7 861 290 3007

**E-mail :** hidromekrus@hidromek.ru

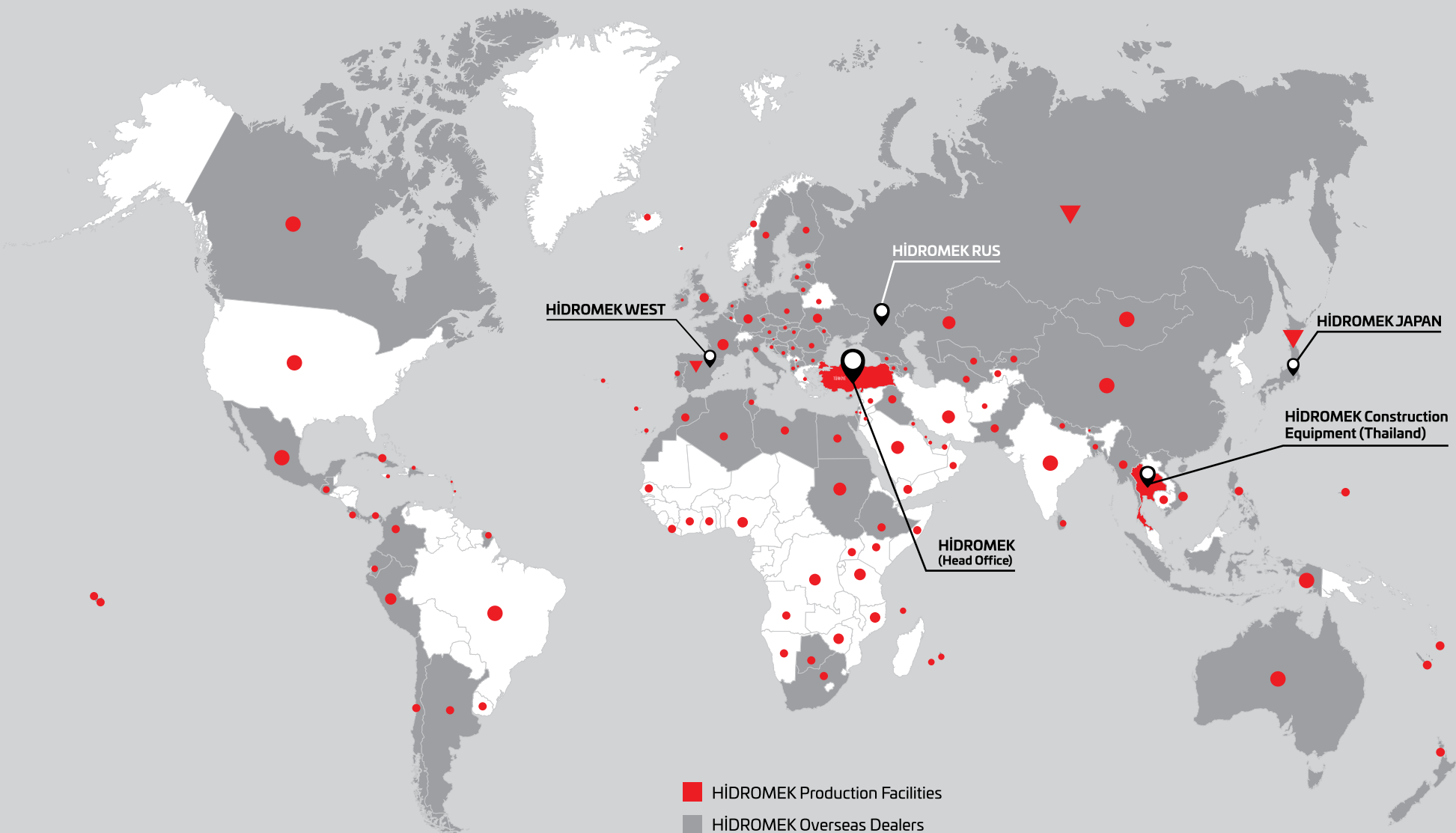
## HİDROMEK® HCE

### HİDROMEK Construction Equipment (Thailand) Ltd.

**Address :** Amata City Chonburi Industrial Estate Phase 7,  
No. 700/669 Moo 1, T.Phanthong,  
A.Phanthong, Chonburi 20160, TAYLAND

**Phone :** +66 38 447 349

**Fax :** +66 38 447 355



HÍDROMEK WEST

HÍDROMEK RUS

HÍDROMEK JAPAN

HÍDROMEK Construction Equipment (Thailand)

HÍDROMEK (Head Office)

- HÍDROMEK Production Facilities
- HÍDROMEK Overseas Dealers
- ▼ HÍDROMEK Overseas Sales and Aftersales Services Points
- Countries HÍDROMEK Machines Running

# HIDROMEK®

Together Stronger

[www.hidromek.com](http://www.hidromek.com)



ENG - NOVEMBER 2025 / 181125 - V

